

Vapors

Adi Stoenescu

Rockish **A** 1st piano, 2nd sax enters

Chords and notation for Section A:

- Staff 1: Gm^7/C , Fm^7/C , Gm^7/C
- Staff 2: Gm^7/C , Fm^7/C , Gm^7/C
- Staff 3: $C\Delta$, Em^7 , $C\Delta^{\#11}/E$
- Staff 4: $C\Delta$, Em^7 , $C\Delta^{\#11}/E$, $F\Delta^{\#11}$
- Staff 5: $D\flat\Delta^{\#11}$, 1. 2.

Chords and notation for Section B:

- Staff 6: **B** half time feel, $D\flat\Delta^{\#11}$, Fm^7 , $A\flat\Delta^{\#11}$, $B\flat\Delta^{\#11}$, C^7_{sus}
- Staff 7: $A\flat\Delta^{\#11}$, $E\Delta^{\#5}$, $E\Delta^{\#5}$, Dm^7 , $G\flat\Delta^{\#11}$

C F7 tenor enters later with the theme G \flat Δ \sharp 11 F7

F7 G \flat Δ \sharp 11 F7

E \flat 7 alt

E \flat 7 alt

1. A \flat 7 \flat 5 F7 sus 2. A \flat 7 \flat 5 F7 sus

A \flat 7 \flat 5 F7 sus A \flat 7 \flat 5 F7 sus

$\text{♩} = \text{♩}$ REPEAT 4 times, SAX enters 3rd time

D E sus G \flat Δ \sharp 11 B \flat 7 sus E sus C \sharp m7 \flat 6 G B \flat Δ /F

E sus G \flat Δ \sharp 11 B \flat 7 sus E sus C \sharp m7 \flat 6 G B \flat Δ /F

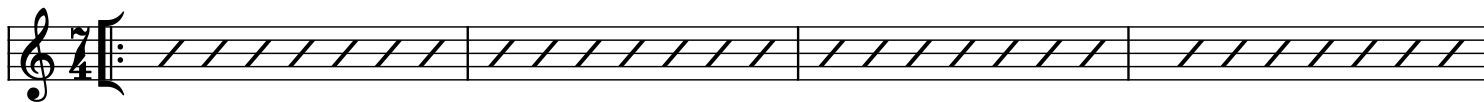
SOLO on C

open, on cue D

F7

G \flat Δ \sharp 11

F7



E \flat 7 alt

A \flat 7 \flat 5

F7 sus



SOLO on D

open, on cue E

E sus

G \flat Δ \sharp 11

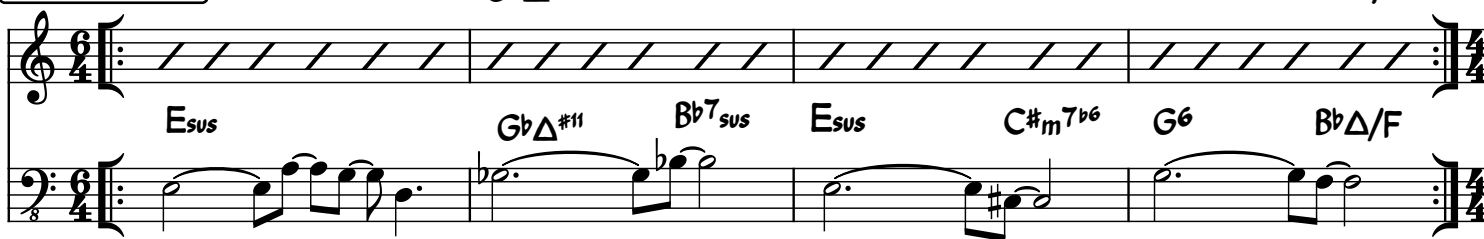
B \flat 7 sus

E sus

C \sharp m7 \flat 6

G

B \flat Δ /F



half time feel

E

A \flat m7

A Δ

G Δ

F Δ



Go to A with 2nd Ending & B

G \flat Δ

A \flat Δ \sharp 11

E Δ \sharp 11

E \flat 13 sus

D13 sus

