

Underwater

Adi Stoenescu

♩ = 104

drum mallets

A

FΔ^{#11}Am⁷A^bΔA^bΔ

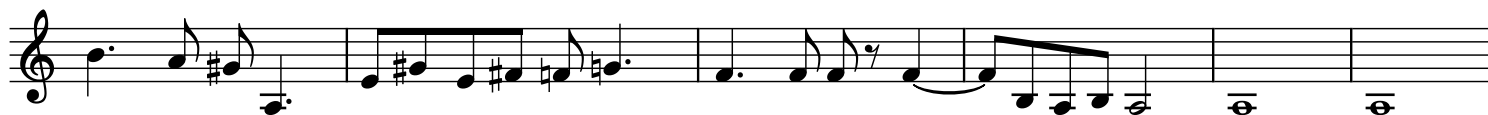
BΔ



BΔ

B^b9_{sus}

AΔ

AΔ⁹A7^{#5}B^bΔG_{sus}⁷FΔ^{#11}Am⁷A^bΔA^bΔ

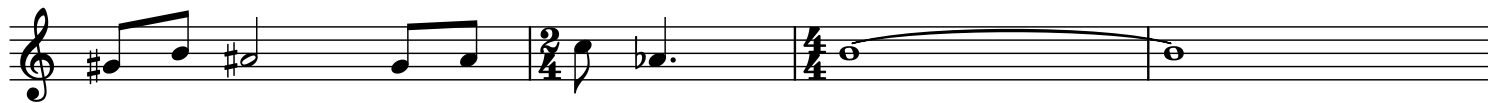
BΔ



BΔ

B^b9_{sus}

AΔ



AΔ

B^o/AAΔ^{#11}

AΔ

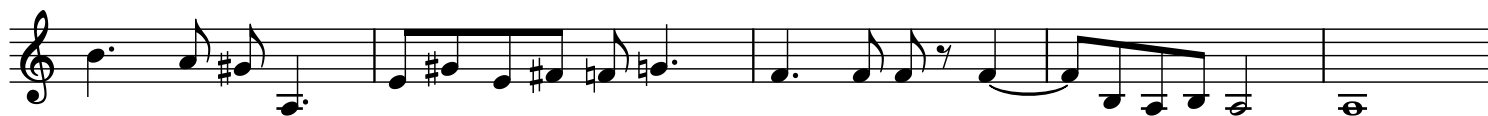
break!



no rhythm section

F[#]m¹¹

rhythm section is back

A7^{#5}B^bΔG_{sus}⁷F[#]m¹¹A7^{#5}B^bΔG_{sus}⁷

B $F\Delta$ G^7_{sus} bass $A^b\Delta$ F/A B^b end bass

$F\Delta$ G^7_{sus} bass $A^b\Delta$ B^b end bass G^7/B

Solo Piano

$F\Delta^{#11}$ A_m^7 $A^b\Delta$

$A^b\Delta$ $B\Delta$ $B\Delta$ $B^b^9_{sus}$ $A\Delta$

$A\Delta$ $A^7_{#5}$ $B^b\Delta$ G_{sus}^7 G_{sus}^7

$F\Delta$ A_m^7 $A^b\Delta$

$A^b\Delta$ $B\Delta$ $B\Delta$ $B^b^9_{sus}$ $A\Delta$

$A\Delta$ B^o/A $A\Delta^{#11}$ $A\Delta$ break!

no rhythm section

rhythm section is back

$F^{\#}_m^{11}$ $A^7_{#5}$ $B^b\Delta$ G_{sus}^7

$F^{\#}_m^{11}$ $A^7_{#5}$ $B^b\Delta$ G_{sus}^7

Solo bass

[illegible]

F Δ G⁷_{sus} bass
Ab Δ Bb end bass
G⁷/B

Coda

Coda ^{bass} $A^b\Delta$ F/A end bass $B^b\Delta$ G_{sus}^7

