

Rubato

Adi Stoenescu

C B E \flat D G \flat E \flat A \flat Δ \sharp 5

C B E \flat D G \flat E \flat A \flat Δ \sharp 5

C B E \flat D G \flat E \flat A \flat Δ \sharp 5

C B E \flat D G \flat E \flat A \flat Δ \sharp 5

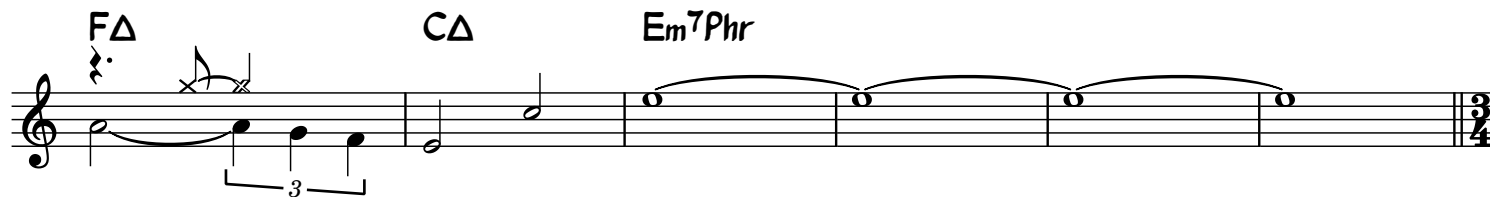
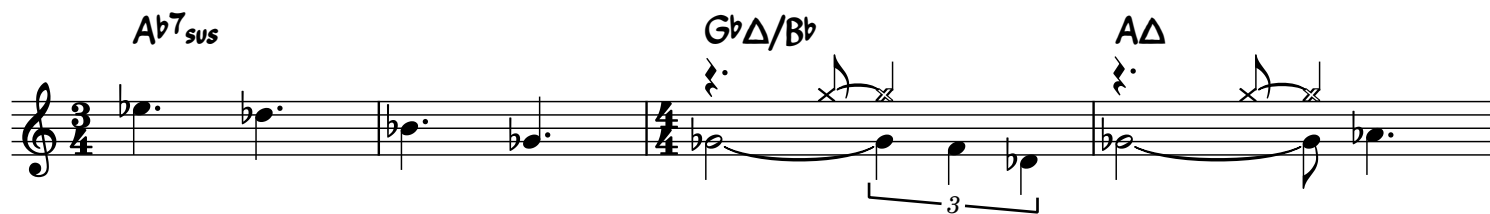
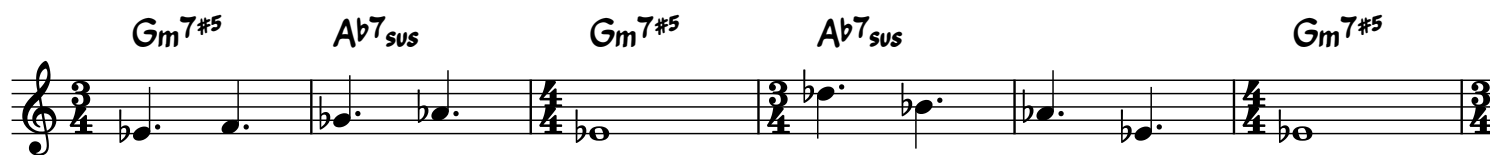
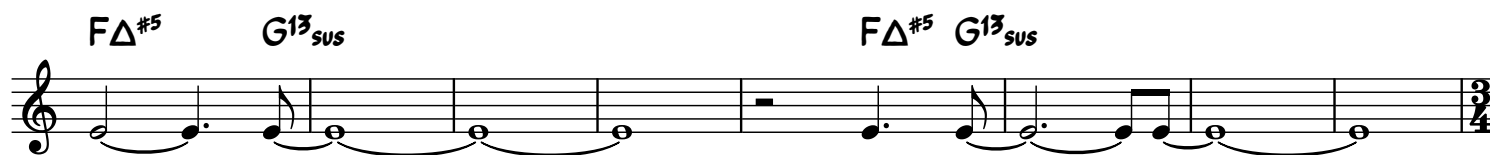
D \flat Δ A \flat Δ G Δ \sharp 11

E \flat Δ B \flat Δ F Δ /A A \flat Δ

E Δ B Δ F \emptyset 7

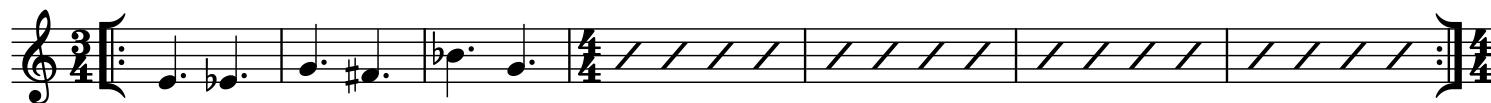
Gm7 \sharp 5 A \flat 7_{sus} E \flat \emptyset 7 B Δ

G \flat Δ F Δ \sharp 11



Solos

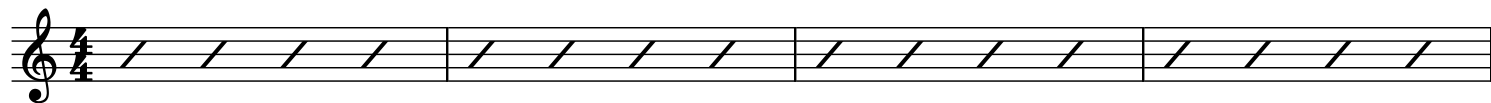
C B E^b D G^b E^b A^bΔ^{#5}



D^bΔ

A^bΔ

GΔ^{#11}

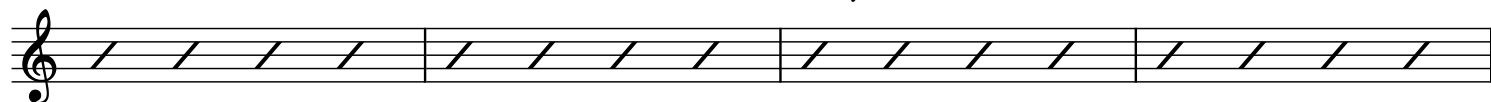


E^bΔ

B^bΔ

FΔ/A

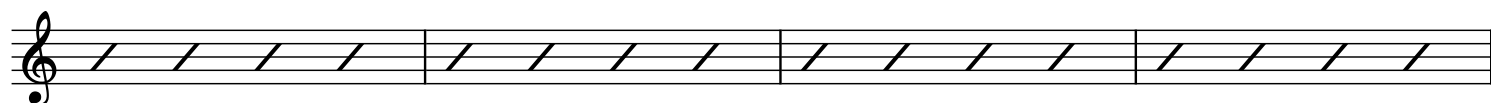
A^bΔ



EΔ

BΔ

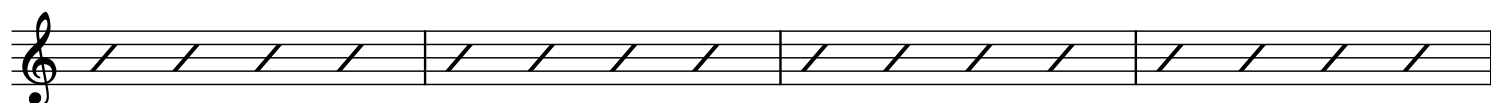
FØ7



G^m7^{#5}

A^b7_{sus}

E^bØ7



BΔ

G^bΔ

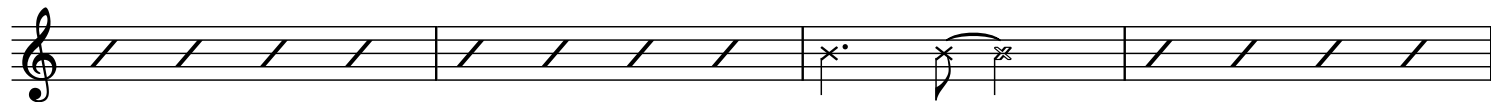
FΔ^{#11}



D^bΔ/F

C⁺

G^b+



G^b+

F^m7



FΔ^{#5}

G1³_{sus}

FΔ^{#5}

G1³_{sus}



FΔ^{#5}

G1³_{sus}

FΔ^{#5}

G1³_{sus}



CODA

After SOLOS, play CODA on cue

The CODA section consists of three staves of music. The first staff begins in 6/8 time and changes to 4/4 time. The second staff is in 3/4 time and changes to 4/4 time. The third staff is in 4/4 time and ends with a double bar line.

Staff 1:

- Chords: $Gm7\sharp5$, $A\flat7_{sus}$, $Gm7\sharp5$, $A\flat7_{sus}$, $Gm7\sharp5$
- Time signatures: 6/8, 4/4, 3/4, 4/4, 3/4

Staff 2:

- Chords: $A\flat_{sus}^4$, $G\flat\Delta/B\flat$, $A\Delta$
- Time signatures: 3/4, 4/4

Staff 3:

- Chords: $F\Delta/A$, $C\Delta$, $Em7Phr$
- Time signature: 4/4