

Tenor Saxophone

# Hesitation I

Adi Stoenescu

**intro** *piano solo*

$G\Delta^{\#11}$   $A^b m^7$   $G\Delta^{\#11}$   $A^b m^7$

**A**  $Gm^6/D$   $Dm\Delta$   $Gm^6/D$   $Dm\Delta$

$G\Delta/B$   $Bm^7$   $G\Delta/B$   $Bm^7$

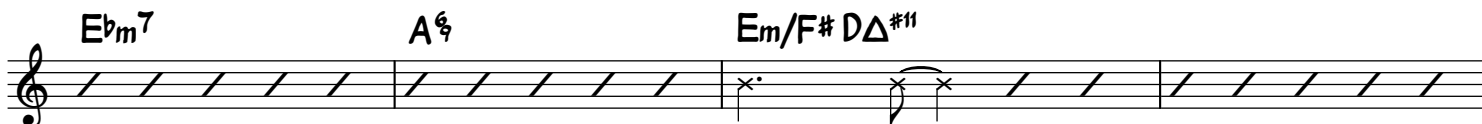
$B^b\Delta^{\#11}$   $D_{sus}\Delta$   $D^7_{sus}$   $C^7_{sus}$   $F\Delta/C$

$D^{\#6}$   $Bm^7$   $G\Delta$

$E^b m^7$   $A^{\#6}$   $E m/F^{\#}$   $D\Delta^{\#11}$

$G\Delta^{\#11}$   $A^b m^7$   $G\Delta^{\#11}$   $A^b m^7$

**A SOLOS**



After first solo, drums take a short solo on these 4 bars



**B** After SOLOS play B as Head Out

Chords and notes for section B:

- Staff 1:  $Gm^6/D$ ,  $Dm\Delta$ ,  $Gm^6/D$ ,  $Dm\Delta$
- Staff 2:  $C\#7_{sus}$ ,  $C\#7$ ,  $C7_{sus}$
- Staff 3:  $Bb\Delta\#11$ ,  $C7_{sus}$ ,  $Bb\Delta\#11$ ,  $C7_{sus}$
- Staff 4:  $Bb\Delta\#11$ ,  $D_{sus}\Delta$ ,  $D7_{sus}$ ,  $C7_{sus}$ ,  $F\Delta/C$
- Staff 5:  $Em/F\#$ ,  $D\Delta\#11$
- Staff 6:  $G\Delta\#11$ ,  $A^bm7$ ,  $G\Delta\#11$ ,  $A^bm7$